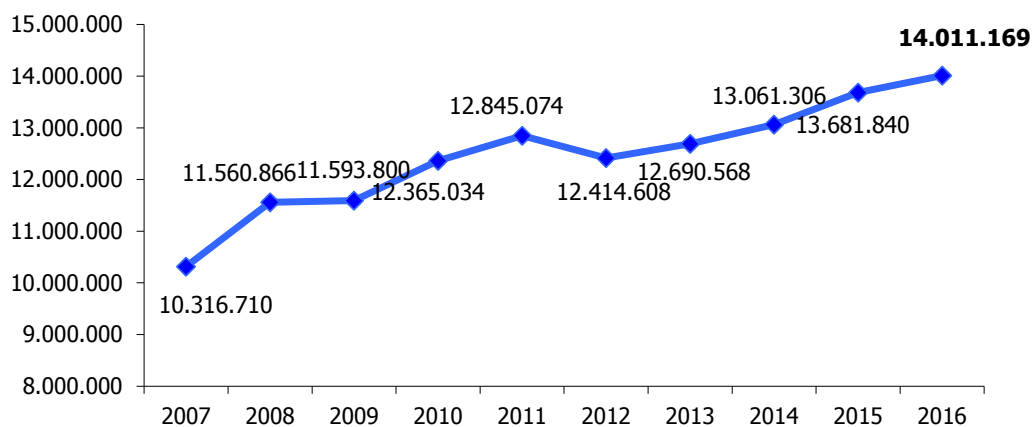
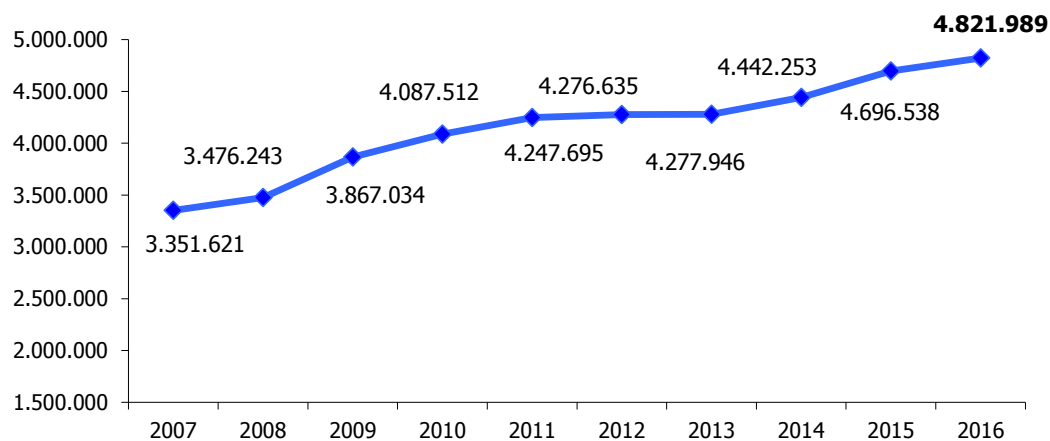


Trend Presenze 2007 - 2016



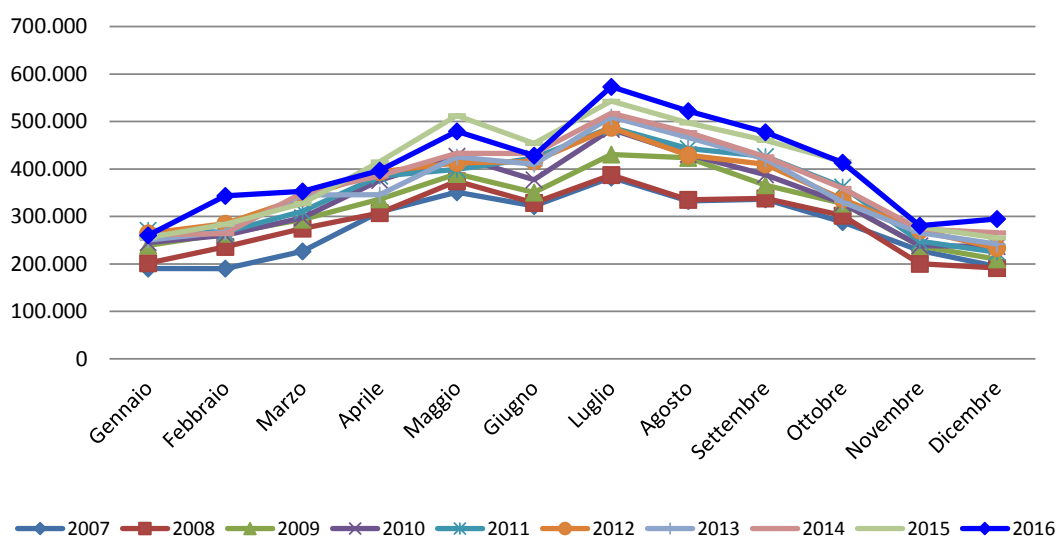
ANNO	PRESENZE	Differenza % su 2007	Differenza % su 2008	Differenza % su 2009	Differenza % su 2010	Differenza % su 2011	Differenza % su 2012	Differenza % su 2013	Differenza % su 2014	Differenza % su 2015
2007	10.316.710									
2008	11.560.866	12,06%								
2009	11.593.800	12,38%	0,28%							
2010	12.365.034	19,85%	6,96%	6,65%						
2011	12.845.074	24,51%	11,11%	10,79%	3,88%					
2012	12.414.608	20,33%	7,38%	7,08%	0,40%	-3,35%				
2013	12.690.568	23,01%	9,77%	9,46%	2,63%	-1,20%	2,22%			
2014	13.061.306	26,60%	12,98%	12,66%	5,63%	1,68%	5,21%	2,92%		
2015	13.681.840	32,62%	18,35%	18,01%	10,65%	6,51%	10,21%	7,81%	4,75%	
2016	14.011.169	35,81%	21,19%	20,85%	13,31%	9,08%	12,86%	10,41%	7,27%	2,41%

Trend Arrivi 2007 - 2016

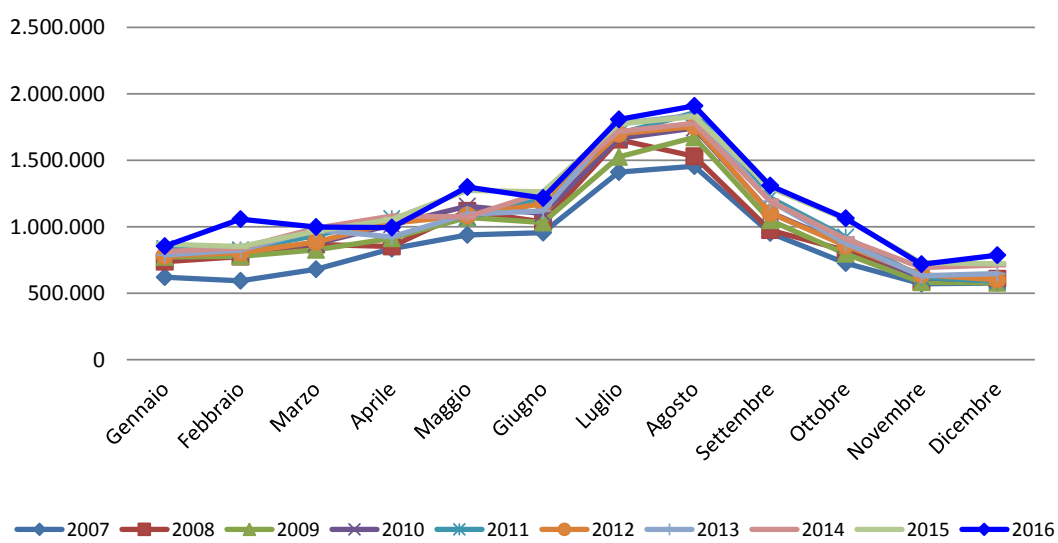


ANNO	ARRIVI	Differenza % su 2007	Differenza % su 2008	Differenza % su 2009	Differenza % su 2010	Differenza % su 2011	Differenza % su 2012	Differenza % su 2013	Differenza % su 2014	Differenza % su 2015
2007	3.351.621									
2008	3.476.243	3,72%								
2009	3.867.034	15,38%	11,24%							
2010	4.087.512	21,96%	17,58%	5,70%						
2011	4.247.695	26,74%	22,19%	9,84%	3,92%					
2012	4.276.635	27,60%	23,02%	10,59%	4,63%	0,68%				
2013	4.277.946	27,64%	23,06%	10,63%	4,66%	0,71%	0,03%			
2014	4.442.253	32,54%	27,79%	14,87%	8,68%	4,58%	3,87%	3,84%		
2015	4.696.538	40,13%	35,10%	21,45%	14,90%	10,57%	9,82%	9,78%	5,72%	
2016	4.821.989	43,87%	38,71%	24,69%	17,97%	13,52%	12,75%	12,72%	8,55%	2,67%

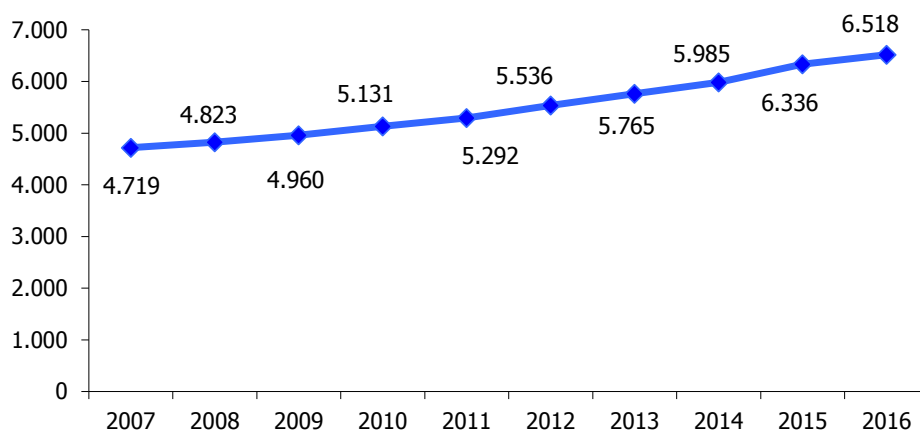
Trend Arrivi Mensili



Trend Presenze Mensili

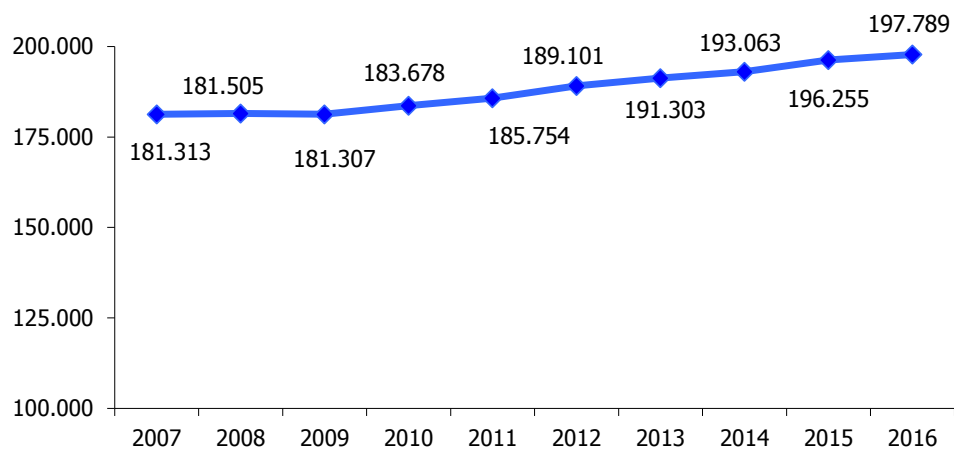


Trend Esercizi Ricettivi 2007 - 2016



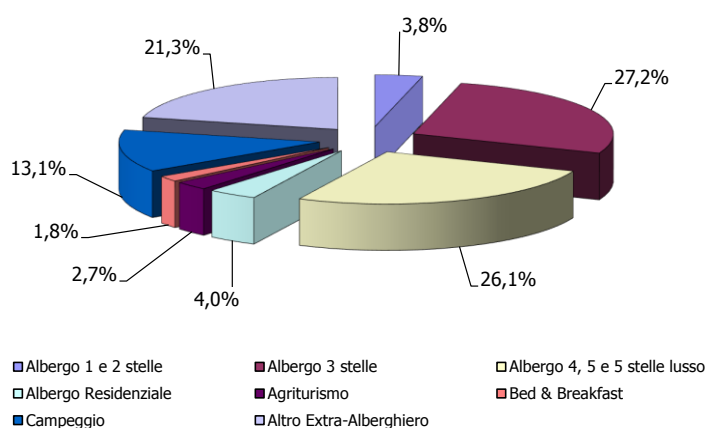
ANNO	STRUTTURE	Differenza % su 2007	Differenza % su 2008	Differenza % su 2009	Differenza % su 2010	Differenza % su 2011	Differenza % su 2012	Differenza % su 2013	Differenza % su 2014	Differenza % su 2015
2007	4.719									
2008	4.823	2,20%								
2009	4.960	5,11%	2,84%							
2010	5.131	8,73%	6,39%	3,45%						
2011	5.292	12,14%	9,72%	6,69%	3,14%					
2012	5.536	17,31%	14,78%	11,61%	7,89%	4,61%				
2013	5.765	22,17%	19,53%	16,23%	12,36%	8,94%	4,14%			
2014	5.985	26,83%	24,09%	20,67%	16,64%	13,10%	8,11%	3,82%		
2015	6.336	34,27%	31,37%	27,74%	23,48%	19,73%	14,45%	9,90%	5,86%	
2016	6.518	38,12%	35,14%	31,41%	27,03%	23,17%	17,74%	13,06%	8,91%	2,87%

Trend Posti Letto 2007 - 2016



ANNO	LETTI	Differenza % su 2007	Differenza % su 2008	Differenza % su 2009	Differenza % su 2010	Differenza % su 2011	Differenza % su 2012	Differenza % su 2013	Differenza % su 2014	Differenza % su 2015
2007	181.313									
2008	181.505	0,11%								
2009	181.307	0,00%	-0,11%							
2010	183.678	1,30%	1,20%	1,31%						
2011	185.754	2,45%	2,34%	2,45%	1,13%					
2012	189.101	4,30%	4,19%	4,30%	2,95%	1,80%				
2013	191.303	5,51%	5,40%	5,51%	4,15%	2,99%	1,16%			
2014	193.063	6,48%	6,37%	6,48%	5,11%	3,93%	2,10%	0,92%		
2015	196.255	8,24%	8,13%	8,24%	6,85%	5,65%	3,78%	2,59%	1,65%	
2016	197.789	9,09%	8,97%	9,09%	7,68%	6,48%	4,59%	3,39%	2,45%	0,78%

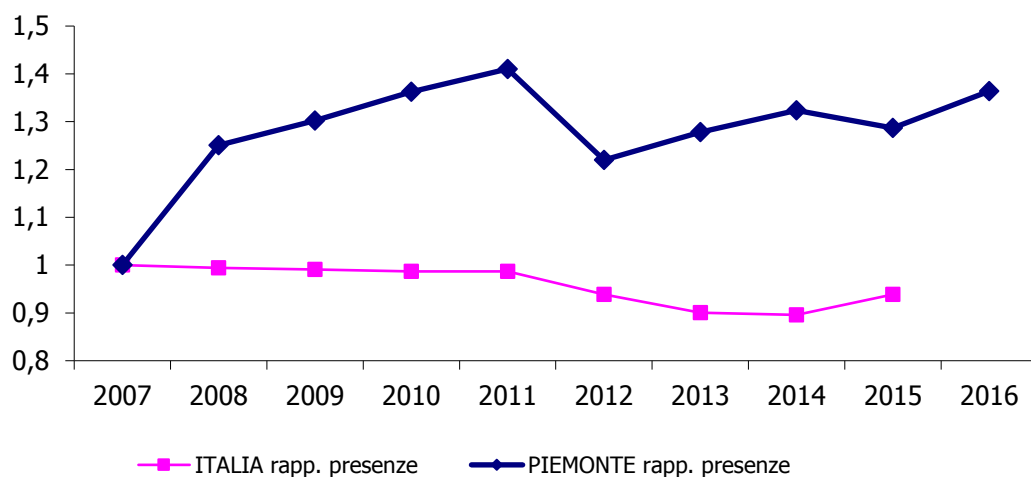
**Presenze 2016 per tipologie di strutture ricettive
Principali Paesi di provenienza - oltre 85% del totale presenze**



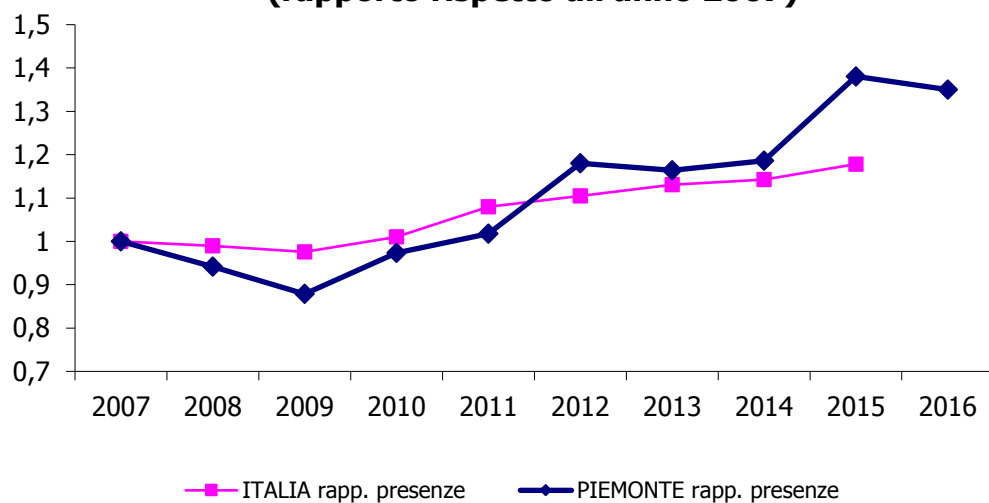
Tipologia struttura	Germania	Francia	Svizzera	Paesi Bassi	Regno Unito	USA	Belgio	Italia	TOTALE
Albergo 1 e 2 stelle	21.013	26.378	12.033	4.325	18.981	3.421	3.594	377.448	467.193
Albergo 3 stelle	291.418	210.596	118.066	44.405	113.530	28.771	37.399	2.469.017	3.313.202
Albergo 4, 5 e 5 stelle lusso	280.028	231.528	169.387	49.734	234.057	145.677	59.931	2.010.001	3.180.343
Albergo Residenziale	36.728	24.869	19.667	11.190	59.195	2.860	3.804	327.018	485.331
Agriturismo	43.464	18.245	44.514	18.911	7.231	8.269	11.972	178.091	330.697
Bed & Breakfast	28.676	19.264	15.005	9.727	4.913	3.534	5.407	127.371	213.897
Campeggio	352.248	51.558	93.201	261.708	18.236	298	30.135	788.496	1.595.880
Altro Extra-Alberghiero	281.101	85.211	113.661	164.847	29.863	21.423	22.657	1.869.867	2.588.630
TOTALE	1.334.676	667.649	585.534	564.847	486.006	214.253	174.899	8.147.309	12.175.173

Il Piemonte rispetto al totale Italia

Presenze turisti italiani (rapporto rispetto all'anno 2007)

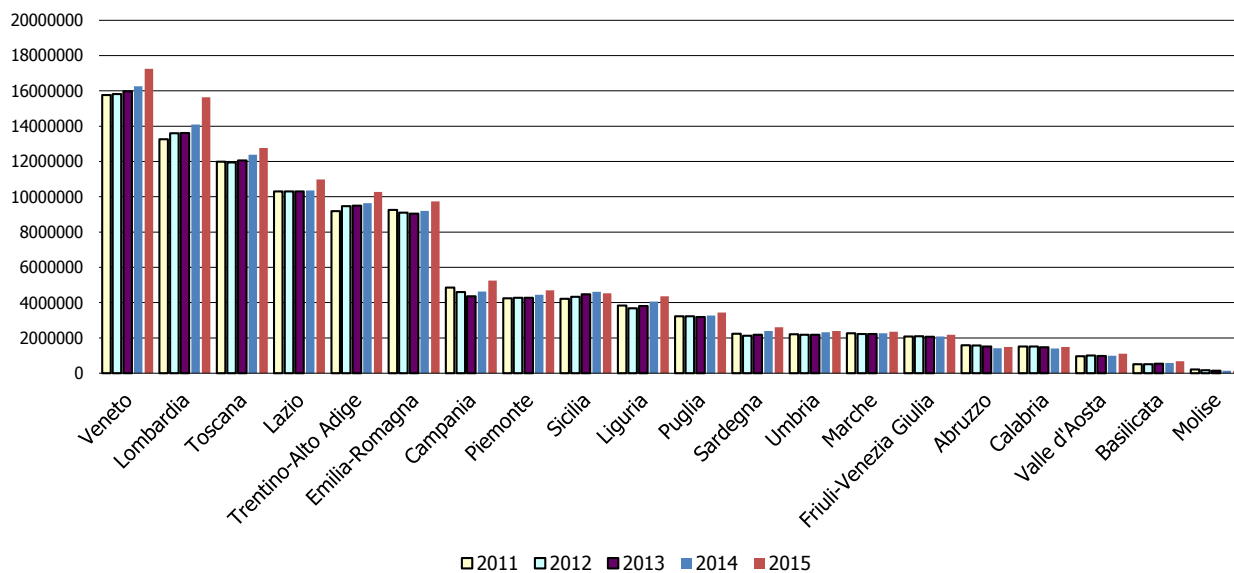


Presenze turisti stranieri (rapporto rispetto all'anno 2007)



Il Piemonte rispetto alle altre regioni italiane

Arrivi



Presenze

